

NOTES :

CONSTRUCTION STANDARDS

TO BE CONSTRUCTED IN ACCORDANCE WITH MANITOBA HYDRO DISTRIBUTION AND SUBTRANSMISSION STANDARDS, LATEST EDITION. NO MAJOR CHANGE SHALL BE MADE WITHOUT APPROVAL OF THE DESIGN ENGINEER OR DELEGATE.

SURVEYS TO STAKE OUT SURVEY MONUMENTS, IF IN THE VICINITY OF THE NEW CONSTRUCTION TO PREVENT DAMAGE OR LOSS.

INSTALLED			
Quantity	Fixture Type	Wattage	Pole Type
2	LED	40	EXCLUSIVE
14	LED	150	EXCLUSIVE
1	LED	240	EXCLUSIVE

SALVAGED			
Quantity	Fixture Type	Wattage	Pole Type
1	LED	40	EXCLUSIVE
3	LED	90	EXCLUSIVE
13	LED	130	EXCLUSIVE
1	LED	162	EXCLUSIVE

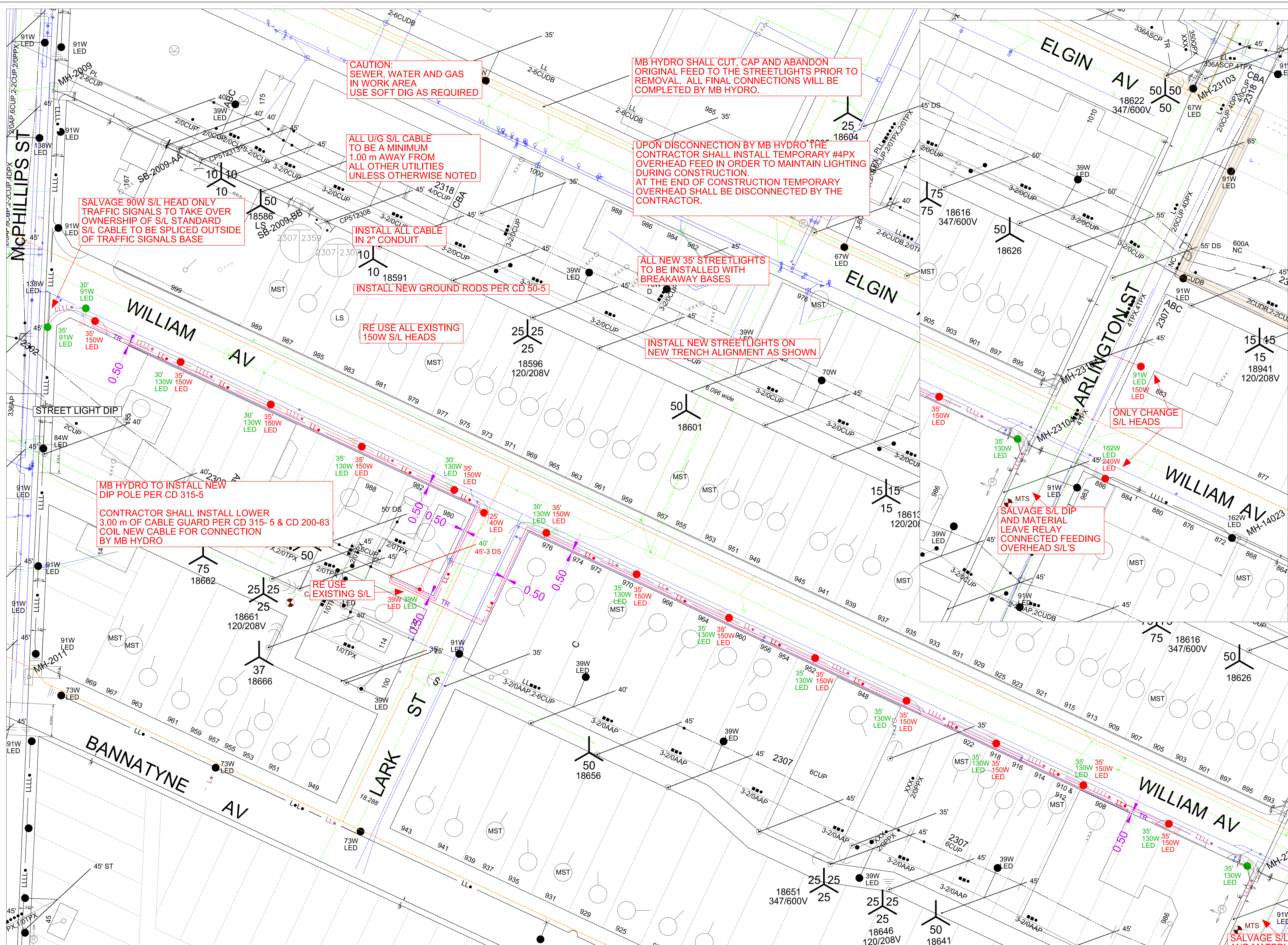
LOCATION	LANE NAME	TYPE	HEIGHT	AVG. LVS	AVG. BRNCH	AVG. BRNCH	AVG. BRNCH	MAX. BRNCH
WILLIAM AVE	150 W LED	R	10.7 m	1.48	1.66	2.30	3.7 m	

PRELIMINARY
NOT TO BE USED FOR CONSTRUCTION

REEL NUMBER	MANUFACTURER	MANUFACTURE DATE

AUTHORITY	NOTIFIED	NOT REQ'D	OBTAINED
DEPT. OF HIGHWAYS		X	
MUNICIPAL		X	
MTS		X	
GIS		X	
EASEMENTS		X	
CONTROL CENTER		X	
RAILWAY		X	
GATV		X	

CONTACT	NAME	PHONE NUMBER	E-MAIL ADDRESS
DESIGN	IAN MCCALLUM	204-470-3154	imccallum@hydro.mb.ca
DESIGN ENGINEER	MAX THEW SINGER	204-360-3201	msinger@hydro.mb.ca
PROJECT MGMT	DARIN WACH	204-360-3202	dwach@hydro.mb.ca
ESA	TIM LOEB	204-360-5157	tloeb@hydro.mb.ca
UIG CONSTRUCTION	BRENT KROEKER	204-793-1570	bkroeker@hydro.mb.ca
OSH CONSTRUCTION	WAYNE IRELAND	204-360-5786	wireland@hydro.mb.ca
HYDRO GAS			
C.O.W CONTACT	RYAN MUNRO	204-228-2304	rmunro@winnipeg.ca
CONSULTANT	MARK EDGAR - STANTEC	204-292-1839	mark.edgar@stantec.com
ENG TECH			
ENG TECH	GEORGE WEDDALL	204-360-7451	gweddall@hydro.mb.ca



CAUTION: SEWER, WATER AND GAS IN WORK AREA USE SOFT DIG AS REQUIRED

MB HYDRO SHALL CUT, CAP AND ABANDON ORIGINAL FEED TO THE STREETLIGHTS PRIOR TO REMOVAL. ALL FINAL CONNECTIONS WILL BE COMPLETED BY MB HYDRO.

ALL U/G S/L CABLE TO BE A MINIMUM 1.00 m AWAY FROM ALL OTHER UTILITIES UNLESS OTHERWISE NOTED

UPON DISCONNECTION BY MB HYDRO THE CONTRACTOR SHALL INSTALL TEMPORARY #4PX OVERHEAD FEED IN ORDER TO MAINTAIN LIGHTING DURING CONSTRUCTION. AT THE END OF CONSTRUCTION TEMPORARY OVERHEAD SHALL BE DISCONNECTED BY THE CONTRACTOR.

SALVAGE 90W S/L HEAD ONLY TRAFFIC SIGNALS TO TAKE OVER OWNERSHIP OF S/L STANDARD S/L CABLE TO BE SPLICED OUTSIDE OF TRAFFIC SIGNALS BASE

INSTALL ALL CABLE IN 2" CONDUIT

ALL NEW 35' STREETLIGHTS TO BE INSTALLED WITH BREAKAWAY BASES

INSTALL NEW GROUND RODS PER CD 50-5

RE USE ALL EXISTING 150W S/L HEADS

INSTALL NEW STREETLIGHTS ON NEW TRENCH ALIGNMENT AS SHOWN

MB HYDRO TO INSTALL NEW DIP POLE PER CD 315-5
CONTRACTOR SHALL INSTALL LOWER 3.00 m OF CABLE GUARD PER CD 315-5 & CD 200-63 COIL NEW CABLE FOR CONNECTION BY MB HYDRO

SALVAGE S/L DIP AND MATERIAL LEAVE RELAY CONNECTED FEEDING OVERHEAD S/L'S

ONLY CHANGE S/L HEADS

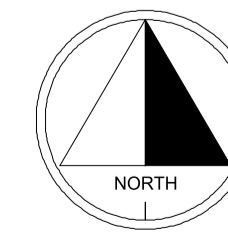
RE USE EXISTING S/L

SALVAGE S/L AND MATERIAL

CONTACT "CLICK BEFORE YOU DIG MANITOBA" AT ClickBeforeYouDigMB.com
THREE FULL WORKING DAYS
PRIOR TO CONSTRUCTION FOR LOCATION OF EXISTING WATER, WASTEWATER, LAND DRAINAGE UTILITIES AND MANITOBA HYDRO UTILITIES

FOR CLEARANCE OF EXISTING WATER & WASTE DEPARTMENT PLANT CONTACT THE SURVEY & INSPECTION BRANCH 48 HOURS PRIOR TO CONSTRUCTION AT 986-3322

NOTE: INDICATION OF ALL UNDERGROUND UTILITIES IS FOR ILLUSTRATIVE PURPOSES ONLY. CONTACT THE APPLICABLE UTILITIES FOR SPECIFIC PLANT LOCATIONS AND CLEARANCES.



DATE	REVISIONS	BY	CHKD.	APP.
00				

DRAWING NUMBER	REFERENCE DRAWINGS	DRAWN	CHKD.
	UGS APPROVAL	DKGI	

SCALE	DATE
1:500	2020 12 01

AREA NUMBER	MANITOBA HYDRO DISTRIBUTION PLANNING & DESIGN
5202	WOF P-33983 NETWORK # 4306472
STATION NUMBER	CSC: CITY CENTRE
FEEDER NUMBER	2302
SYSTEM VOLTAGE	4 KV
CUSTOMER SERVICE PROJECT SALVAGE OF STREETLIGHTS AND INSTALLATION OF STREETLIGHT BASES, STANDARDS AND U/G CABLE WILLIAM AV BTWN MCPHILLIPS ST AND ARLINGTON ST	
1-04707-DE-50000-0539	SHT. 1/1 REV. 00